

Step by Step Instructions

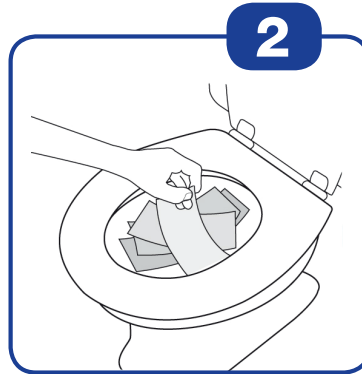


Write on the label of the sampling bottle:

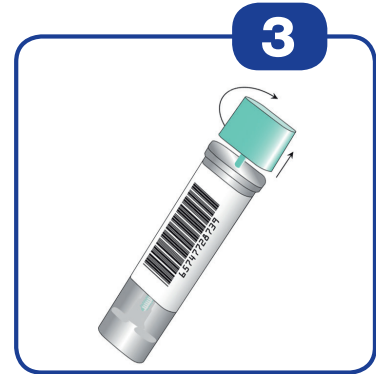
[N] Name and first name

[A] Date of birth

[D] Date of sample collection



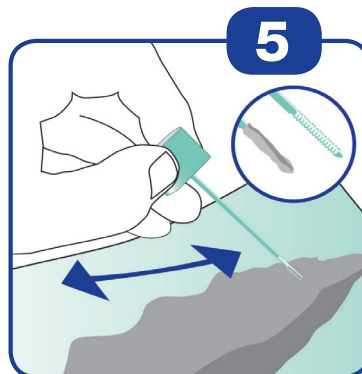
Place collection paper or several layers of toilet paper inside toilet bowl on top of water. Deposit stool sample on top of paper.



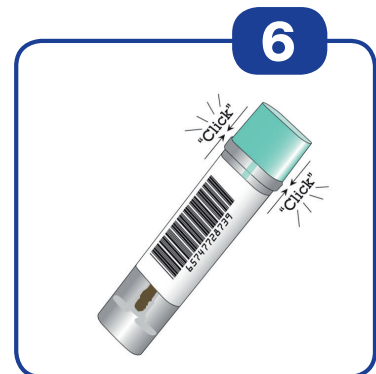
Open sampling bottle by twisting and lifting the green cap.



Collect a sample by scraping the green stick over the surface of the bowel movement.



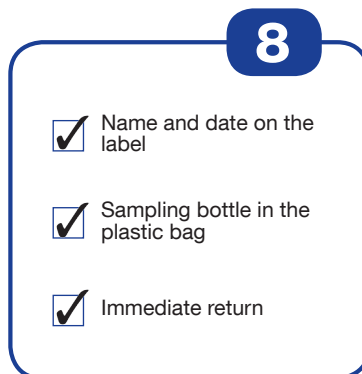
The grooved end of the stick has to be covered with fecal sample. **Do not overfill the stick.** A small amount of sample is sufficient.



Insert the stick back into the tube and push the green cap close (click the green cap on tightly). **Do not repeat the sample collection.**



Shake the closed sampling bottle vigorously and place it in the green plastic bag. Return the tube the same day or the next day to **your doctor** (screening center).



Please check!

V. 2017-08-02 (engl)

Distributed by:

Mast Diagnostica GmbH

Feldstraße 20
DE-23858 Reinfeld

Tel. +49 (0)4533 2007 0
Fax +49 (0)4533 2007 68

fit@mast-diagnostica.de
www.fit-screening.de



**Mast
Group**

Manufactured by:



EIKEN CHEMICAL CO.,LTD.
4-19-9, Taito-ku, Tokyo 110-8408, Japan